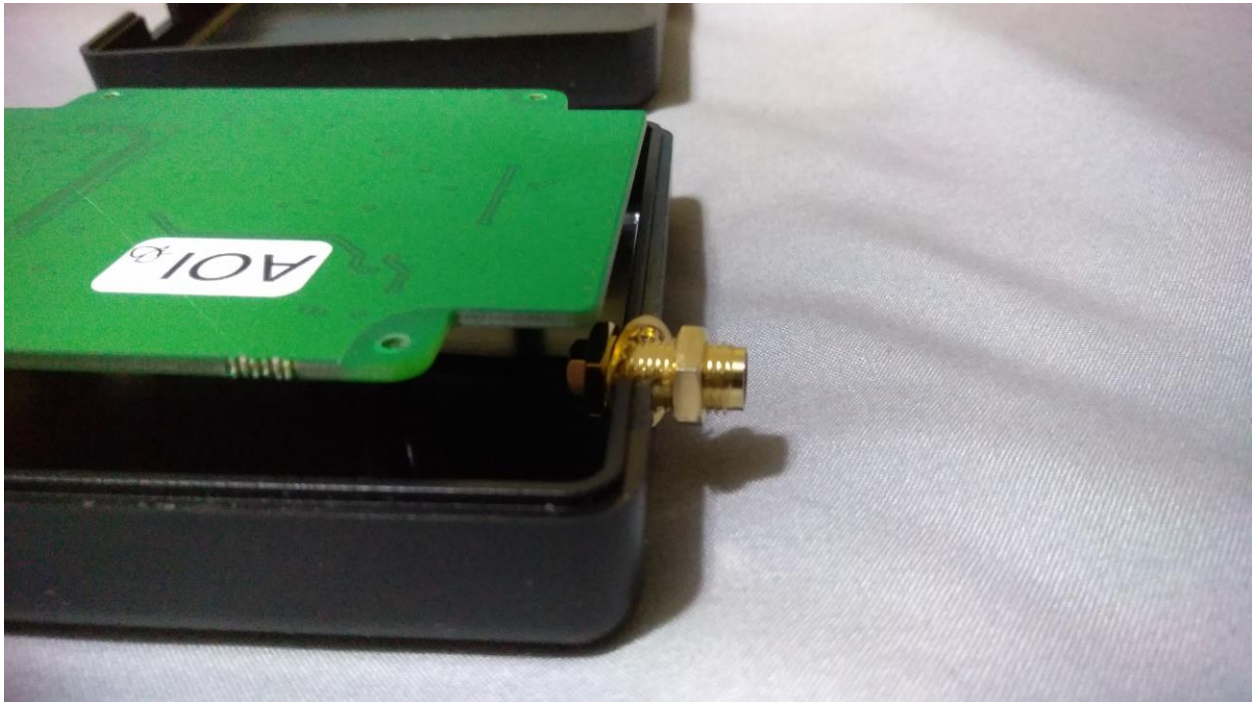


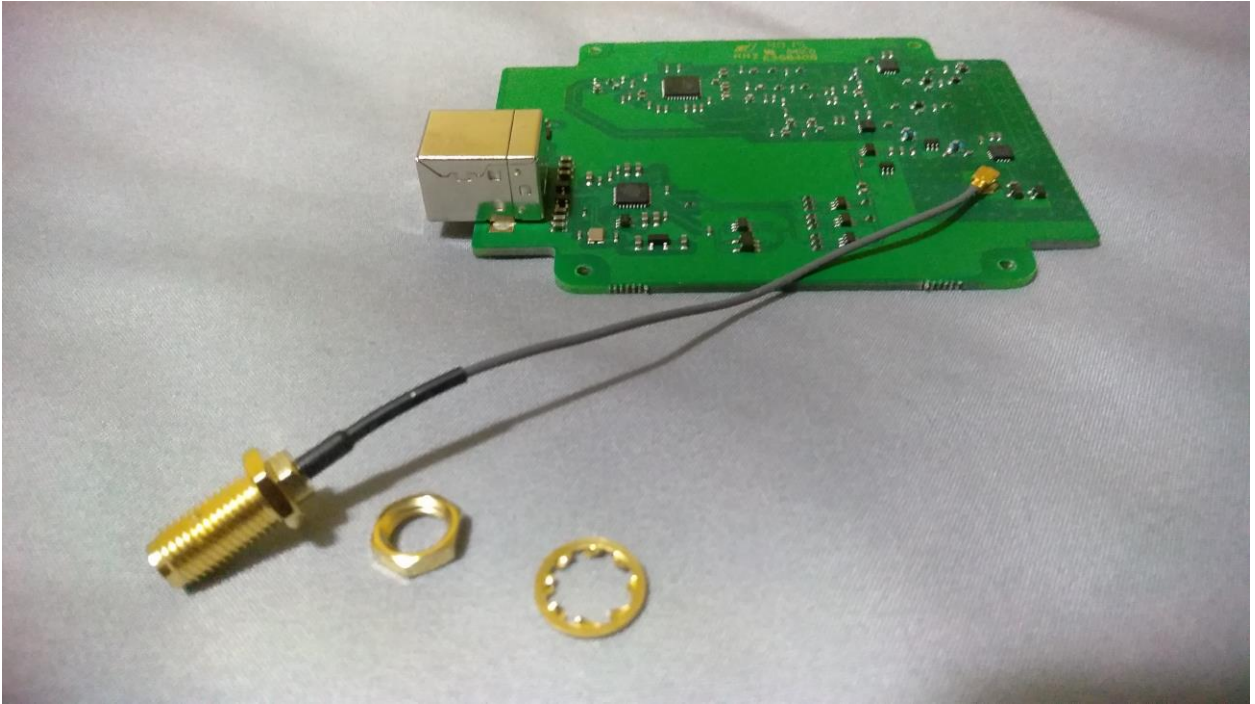
# RSP-1 Metal case quick guide



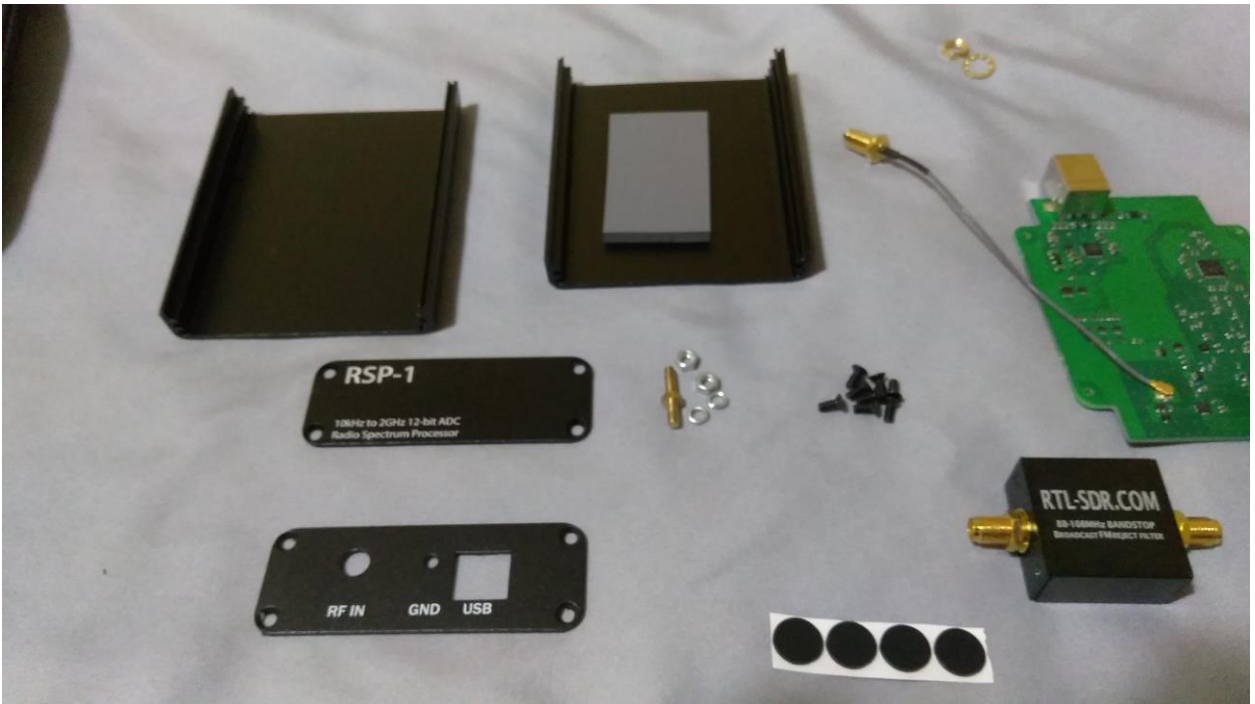
Remove the 4 screws from the RSP-1



Loosen the RSP-1 SMA retaining nut

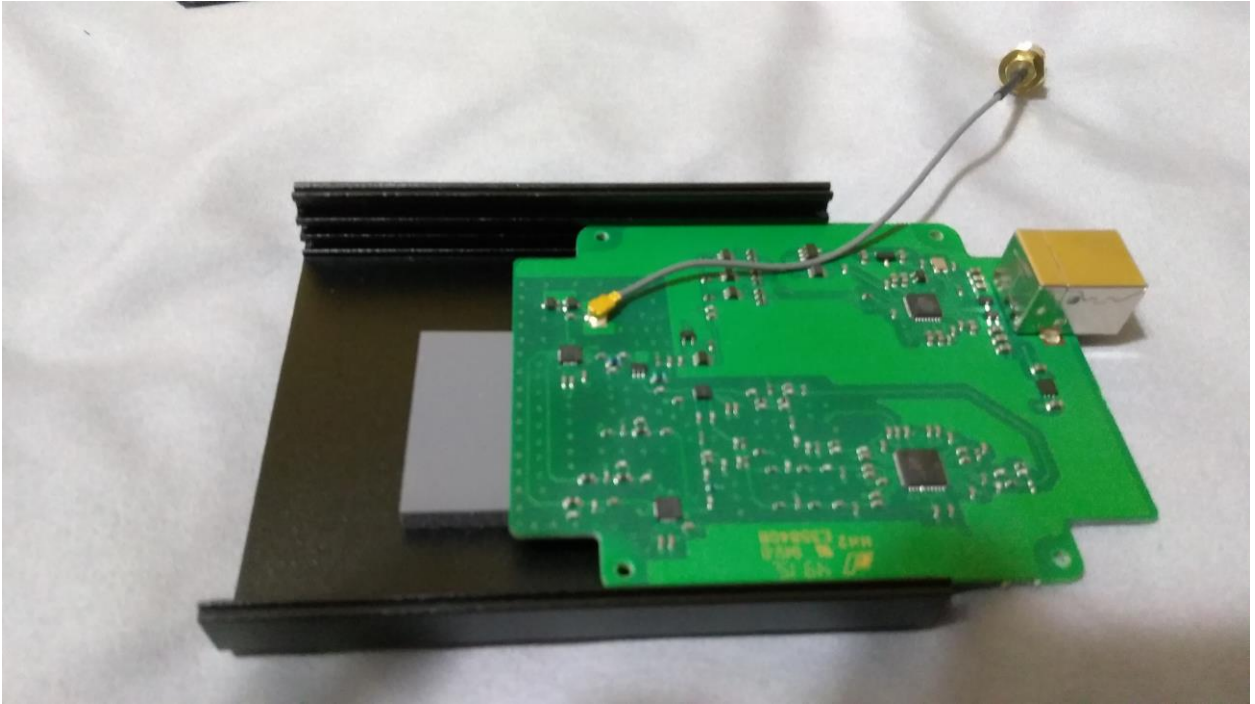


Carefully remove the RSP-1 PCB

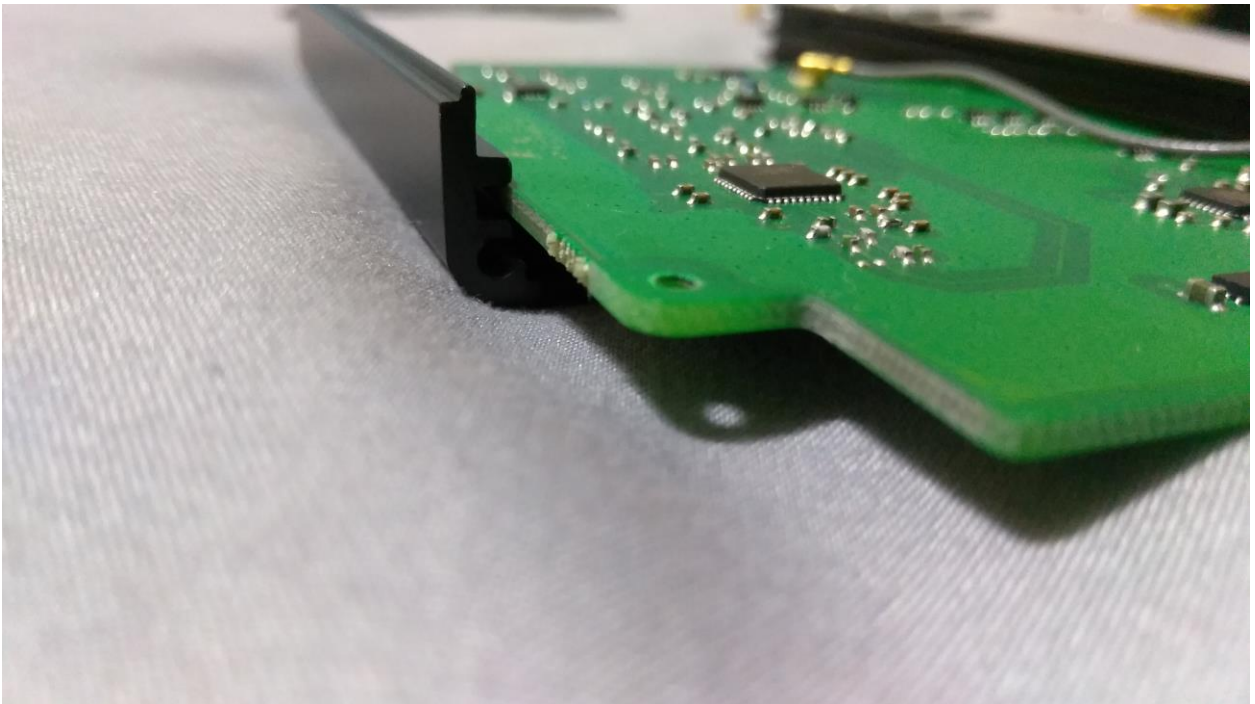


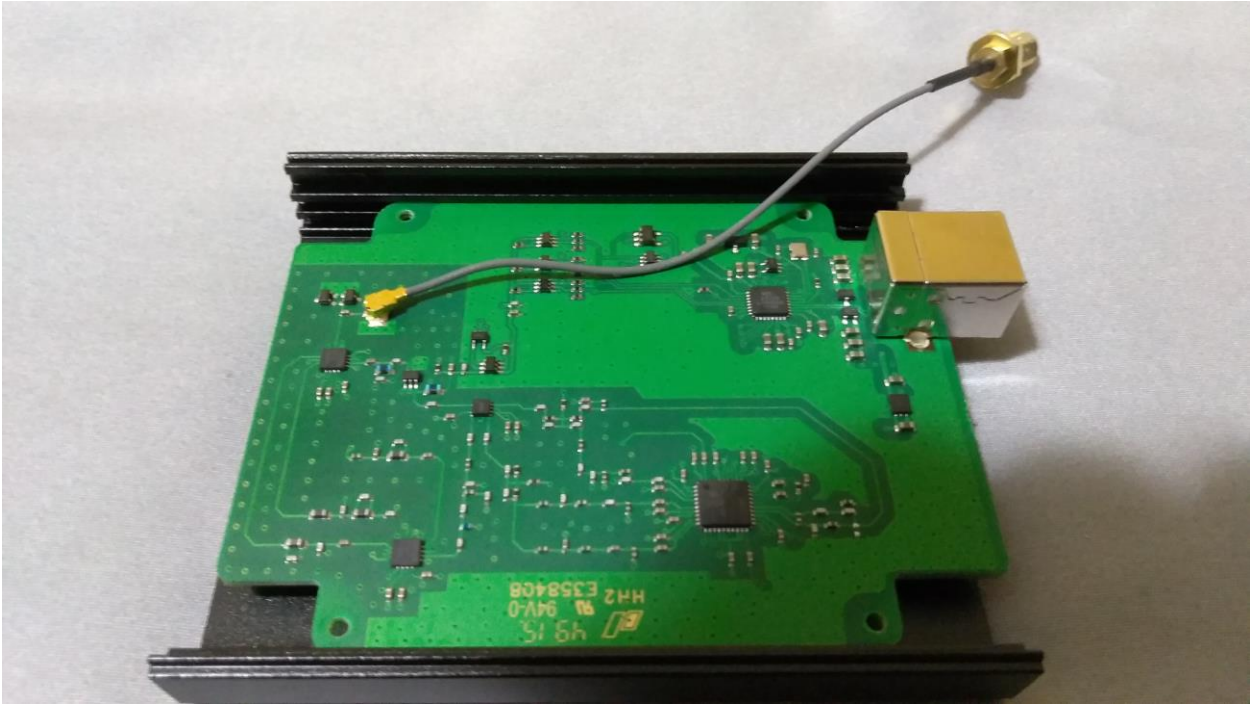
Layout your parts for assembly



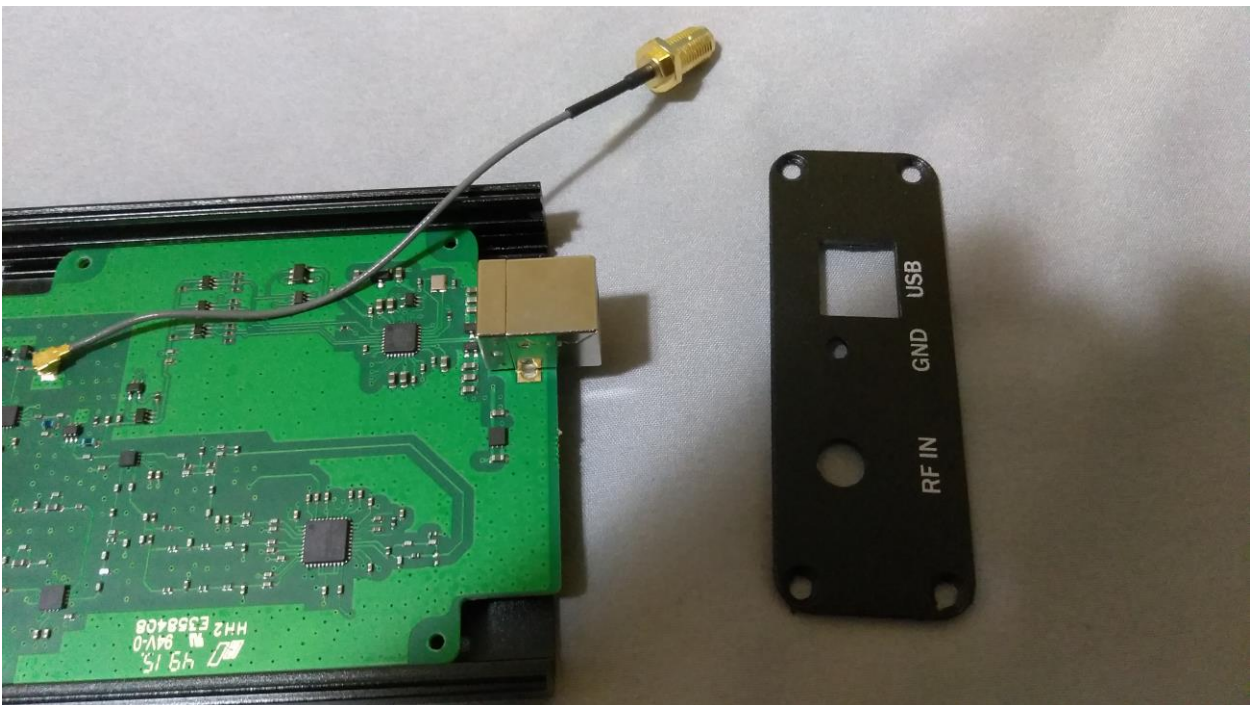


Insert the RSP-1 as shown (Note the thermal pad and board placement)



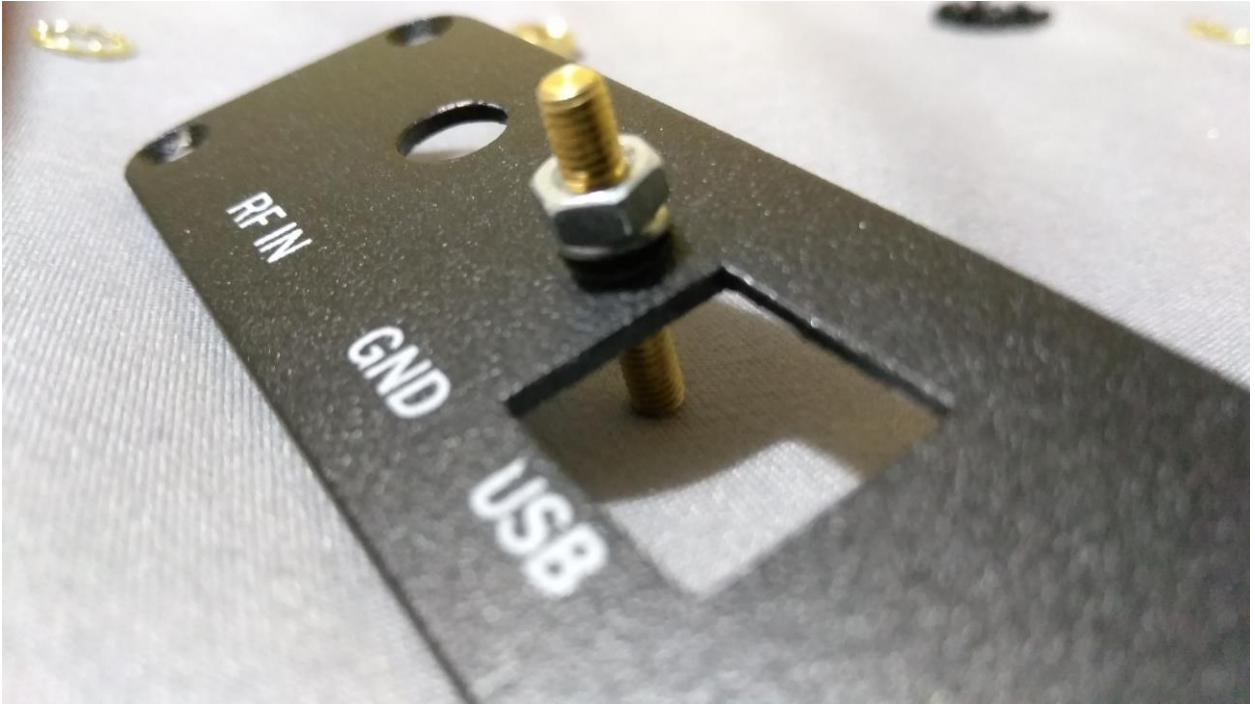


Slide in the PCB and line up the RSP-1 PCB with left bottom of the case as shown

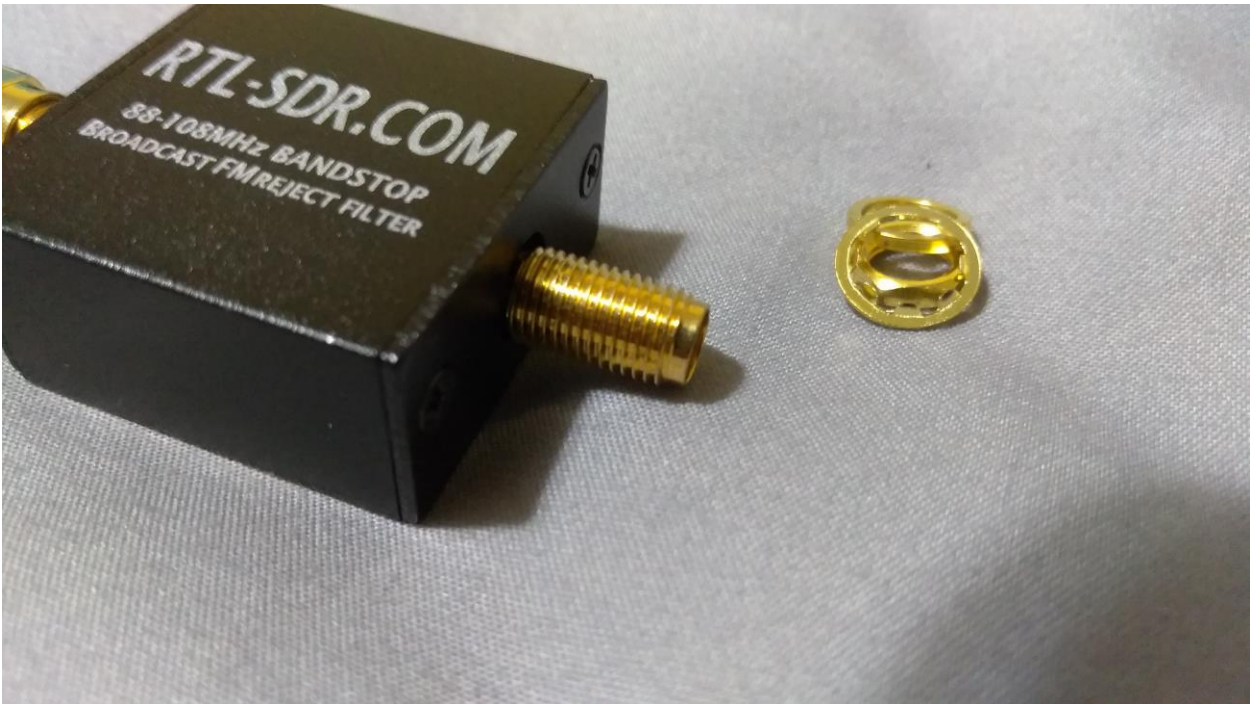


Prepare the back plate





Attach the ground lug as shown



Remove the retaining nut and washer from the FM trap as shown



Insert the FM notch and reattach the washer and retaining nut



Attach the SMA MALE barrel plug to the FM Notch and Attach the RSP-1 pigtail to the other end of the barrel plug as shown

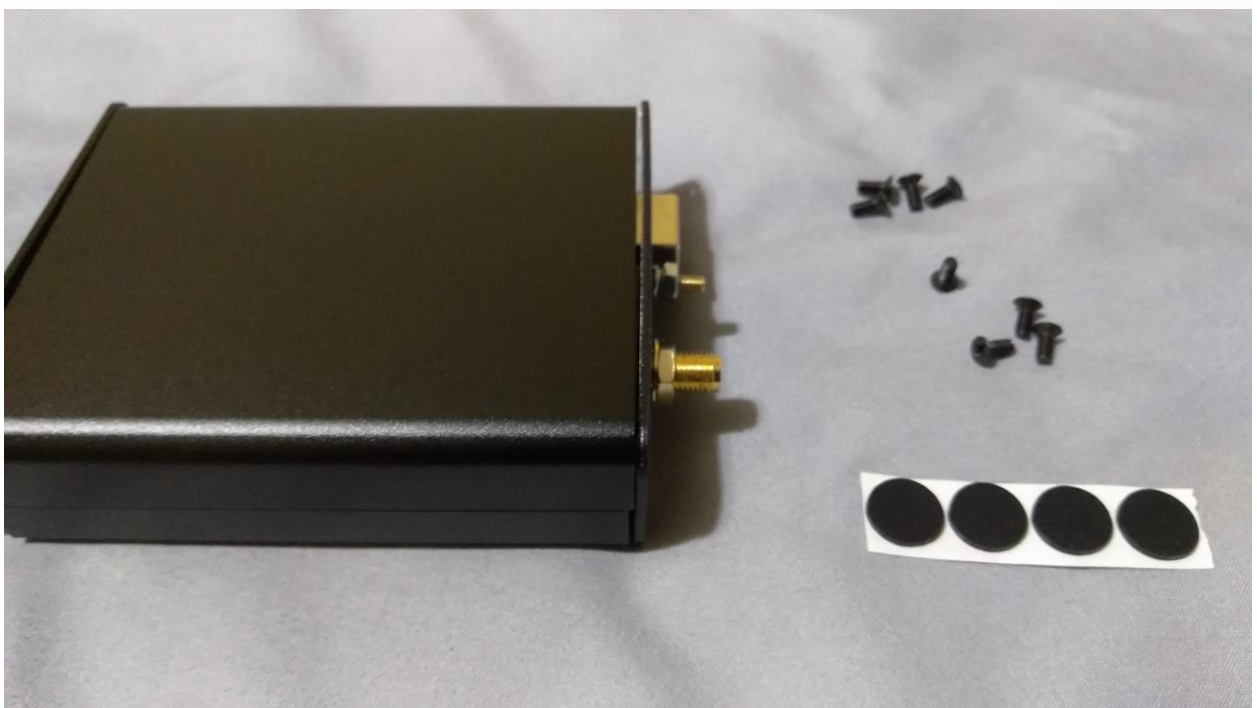




Prepare to attach the top section of the case



Attach the top and bottom and slide into place (note the groove)



Screw in the 8 screws carefully and attach the 4 rubber feet.